

AGENDA
FOR THE REGULAR MEETING OF THE
LEDUC PARKS, RECREATION AND CULTURE ADVISORY BOARD

January 23, 2020 5:30pm
Telford Street Board Room – Leduc Civic Centre

1. CALL TO ORDER

2. WELCOME & INTRODUCTIONS

- a. Welcome new Board members
- b. Overview of the PRC Board J. Kamlah – 10 minutes

3. ADOPTION OF AGENDA

4. APPROVAL OF PREVIOUS MINUTES

Motion to approve previous minutes from December 19, 2019

5. DELEGATIONS & PRESENTATIONS

- a. Parks & Open Spaces Plan Update, and R. Yeung – 20 minutes
2020 Major Parks Projects Overview

6. ROUND TABLE

An opportunity for members to share parks, recreation and culture related questions, issues and opportunities that may be of interest to the Board.

- Leduc City Council Update Councillors Lazowski & Hansen
- Leduc County Update Councillor Wanchuk

7. OLD BUSINESS

8. NEW BUSINESS

- a. 2020 Organizational Business J. Kamlah – 15 minutes
 - Election of Chairman
 - Election of Vice-Chairman
 - Committee appointments:
 - 1) Citizen Recognition Committee -1 board member
 - 2) Parks Naming Committee - 2 board members, 1 Council rep
 - 3) Sports Hall of Fame Committee -2 board members
- b. 2020 Agenda Setting J. Kamlah – 15 minutes

9. INFORMATION ITEMS

- a. 2020 PRC Board member contact list - distributed

10. FUTURE AGENDA ITEMS

11. ADJOURNMENT

7:00pm

The Purpose of the Board is to advise the City Council on the planning of a broad range of parks, recreation and cultural services and programs within the City of Leduc. Our Vision is of a thriving community with an abundance of parks, recreation, cultural activities, programs and facilities that promote a healthy, happy environment for all.

MINUTES

for the Leduc Parks, Recreation & Culture Advisory Board

December 19, 2019 6:00pm

Oil Kings Board Room – Leduc Recreation Centre

Present: Councillor Terry Lazowski Kirsha Campbell Chris Ehmann Rebecca Soch
Councillor Larry Wanchuk Lyndon Anderson Jay Cole Dylan Ryan
Councillor Lars Hansen Brandon Sonnenberg

Also Present: Jackie Kamlah – Director, Recreation Services

Regrets: none

I. CALL TO ORDER

Meeting was called to order by Chair J. Cole at 6:01pm.

II. WELCOME & INTRODUCTIONS

III. ADOPTION OF AGENDA

MOTION by Councillor Wanchuk that the Agenda be adopted as presented

Motion Carried

IV. APPROVAL OF PREVIOUS MINUTES

MOTION by C. Ehmann that the previous meeting minutes be approved as presented

Motion Carried

V. DELEGATIONS & PRESENTATIONS

None

VI. ROUND TABLE

- Discussion with the Hub being planned for this meeting has been postponed to the New Year due to their availability.

VII. DEPARTMENT UPDATES

A. Leduc City Council Update

- Partnership with Leduc Golf Course is proceeding.
- Budget 2020
 - o Several capital projects cut back and/or postponed.
 - o Overall a budget of restraint, with tax increase approved for 0.27%.
 - o Board members inquired if grants would be impacted. Councillor Lazowski indicated that grants issued by the City have not been impacted (i.e. GTO) but several provincial grants the City receives have been reduced/cut.

B. Leduc County Update

- Budget was recently approved with a 0% tax increase.
- Winter Try it event at Wizard Lake coming up early in 2020.

C. Department Updates

J. Kamlah highlighted several items within the reports:

Business Services – Active 8s & 9s year-round initiative launching in January.

Events & Bookings – people counting information for November events.

Recreation Services – aquatic programming impacts due to Beaumont facility closure.

MINUTES

for the Leduc Parks, Recreation & Culture Advisory Board

January 23, 2020 5:30pm

Telford Street Board Room – Leduc Civic Centre

Present: Councillor Terry Lazowski Kirsha Campbell Chris Ehmann Rebecca Soch
Councillor Lars Hansen Stan Sawchuk Brandon Sonnenberg

Also Present: Jackie Kamlah – Director, Recreation Services
Rachel Yeung – Manager, Community Development

Regrets: Councillor Larry Wanchuk Hugo Charles Marnie Andrews

1. CALL TO ORDER

Meeting was called to order by Vice Chair B. Sonnenberg at 5:28pm.

2. WELCOME & INTRODUCTIONS

- a. Welcome to new Board members
Board members welcomed S. Sawchuk as one of the three new members starting their term with the PRC Board. Round table introductions.
- b. Overview of the PRC Board
J. Kamlah provided an overview of the PRC Board. Presentation attached.

3. ADOPTION OF AGENDA

MOTION by C. Ehmann that the Agenda be adopted as presented.
Motion Carried

4. APPROVAL OF PREVIOUS MINUTES

MOTION by K. Campbell that the previous meeting minutes be approved as presented.
Motion Carried

5. DELEGATIONS & PRESENTATIONS

- a. Parks & Open Spaces Plan Update and 2020 Major Parks Projects Overview
R. Yeung highlighted the results of the community engagement undertaken during the review of the POST Master Plan. Recommended changes to two City documents were presented – POST Master Plan and Minimum Landscape Design and Construction Standards. Presentation attached.

R. Yeung provided details on the major parks capital projects slated for 2020:
 - Windrose Multiway
 - Simpson Park playground and trail connections
 - Telford Lake Trail weed removal/grass and amenities (port-a-potties, garbage receptacles, benches)

6. ROUND TABLE

No items from the Board.

Councillors Hansen and Lazowski provided the following Leduc City Council Update:

- Regional Transit Service analysis is complete with decision expected in late February.

- The Hub has hosted 31 individuals since operations started and can house up to 12 people each night during the winter months. City Council approved funding to assist with on site security costs.
- City's Youth Council is currently accepting applications for the 10 positions available.
- City of Leduc's City Manager is retiring and Council will soon commence the recruitment for his replacement.

7. OLD BUSINESS

None

8. NEW BUSINESS

a. 2020 Organizational Business

- Election of Chair

Self nominations by Brandon Sonnenberg and Kirsha Campbell. Board voted via ballot and Brandon Sonnenberg was elected as Chair.

MOTION by C. Ehmann to appoint Brandon Sonnenberg as Chair of the PRC Advisory Board for 2020.

Motion Carried.

- Election of Vice Chair

MOTION by R. Soch to appoint Kirsha Campbell as Vice Chair of the PRC Advisory Board for 2020.

Motion Carried.

- Committee Appointments:

1. Citizen Recognition Committee – **Chris Ehmann**
Nominated by self, All in Favor.

2. Parks Naming Committee – **Rebecca Soch, Stan Sawchuk, Terry Lazowski**
Nominated by self, All in Favor.

3. Sports Hall of Fame Committee
Will bring item back to February's meeting to allow those not in attendance the opportunity to volunteer.

b. 2020 Agenda Setting

Using the five goals in the Recreation Framework, the Board to identified potential projects that they would like to focus on for 2020. Below is the brainstormed list of projects, which will be revisited in February once all board members are in attendance and the board will identify their 4 – 5 priorities for the year.

Goal 1 – Active Living

- June is Recreation & Parks Month – themes for information sharing and potential events (i.e. neighbourhood clean up) to focus on for 2020.
- Community recreation promotional campaign themes
- Technology and our parks/trails. What does the future of park spaces look like and what should we be planning for in Leduc?

- Evolution of recreation and play. Understanding the new approach to play and how do we facilitate, reduce barriers and encourage less structure?
- E-scooters, bike share initiatives – what are they and how can we accommodate?

Goal 2 – Inclusion & Access

- City and community funding support programs – annual statistic and trend information.
- Barriers to Participation – engaging community on barriers to participation in parks, recreation and cultural opportunities and developing action plan / recommendations.
- Transit strategy for community – learn more about plans and how it can support community's participation and access to recreation, parks and culture opportunities.

Goal 3 – Connecting People and Nature

- Request to hear from Public Services on the tree planting plans for 2020 and longer-term priorities.
- Request to hear from RCMP, Enforcement and/or Nighthawks on community safety concerns and priorities with a focus on safety in the City's green spaces/trails and City facilities. Potentially engaging community on what are their concerns and suggestions for increasing the feelings of safety and security when using these amenities.
- TD Spruce Up Program – learn more about this grant and organize a campaign/event in support.

Goal 4 – Supportive Environments

- ARPA Choosewell Initiative - learn more about this grant and organize a campaign/event in support.
- Arts, Culture & Heritage Strategy – board would like opportunity to be a part of its development.
- Tourism development was identified as a provincial priority, an opportunity for Leduc to do the same.

Goal 5 – Recreation Capacity

- Parks, Recreation and Culture Forum – developing future Sports Tourism strategy. Board actively involved in planning and facilitating event and in the development of the priorities for the ST Strategy.
- Neighbourhood BBQs – learning more about the City's approach to connecting neighbours and what the board can do to support.

9. INFORMATION ITEMS

a. 2020 PRC Board Member Contact List


Make note of cell phone number correction for B. Sonnenberg. Should be 780-668-5393.

10. FUTURE AGENDA ITEMS

- Sports Hall of Fame Committee appointments
- Information on TD Spruce Up Campaign and ARPA's Choosewell Initiative

11. ADJOURNMENT

Meeting was adjourned by Chair B. Sonnenberg at 6:50pm.


 CHAIR, Brandon Sonnenberg



Parks, Recreation & Culture Advisory Board

2020 Orientation & Agenda Setting
January 23, 2020



to our new board members:

Marnie Andrews
Hugo Charles
Stanley Sawchuk


and welcome back returning members:

Board Members

Kirsha Campbell
Chris Ehmann
Rebecca Soch
Brandon Sonnenberg
Councillor Terry Lazowski
Councillor Lars Hansen
Councillor Larry Wanchuk (Ray Scobie)

Admin Liaisons

Jackie Kamlah
Julie Beloin



Purpose of the Parks, Recreation & Culture Board is to advise City Council on the planning of a broad range of parks, recreation and cultural services and programs within the City of Leduc.



"A thriving community with an abundance of parks, recreation & cultural activities, programs & facilities to promote a healthy, happy environment for all users."

Adopted by the PRC Board – Dec. 2002



Board Expectations

The Board expects its members to carry out their duties in an ethical and professional manner. City of Leduc Parks, Recreation & Culture Board members:

- ✓ Represent and share the perspective of the broader community
- ✓ Regularly attend, prepare for and actively participate in meetings
- ✓ Show loyalty and respect to the board and speak positively of it
- ✓ Foster positive working relationships
- ✓ Discuss and debate issues freely at meetings and ultimately speak with one voice
- ✓ Conflicts of interest are volunteered
- ✓ Follow appropriate lines of communication

Meetings at a Glance

Schedule

Agenda

Minutes

Quorum

Attendance

Agenda Setting Criteria

1. Is it strategic?
2. Does it garner feedback?

City of Leduc Staff Partners

Recreation Services

- Aquatic Services & Operations
- Recreation Programs & Child Minding
- Fitness Services & Operations
- Guest Services
- Indoor & Outdoor Facility Bookings
- Sports Tourism
- Community Partnerships & Sponsorship
- Arena Operations
- Custodial Services

Facility & Property Services

- Facility Maintenance & Development

Community & Social Development

- Community Events
- Arts, Culture & Heritage
- Community Development
- Volunteer Development & Recognition
- Parks & Outdoor Facility Development

Public Services

- Landscape Technician
- Parks & Open Spaces
- Multiway Trails
- Sports Fields Maintenance
- Arborist & Horticulture
- Communities in Bloom

Organizational Business

Election of Chairman

Election of Vice Chairman

Committee Appointments

Citizen Recognition Committee (1)

Parks Naming (2 public + 1 Council)

Sports Hall of Fame Sub-Committee (2)



Note: Grants To Organizations (GTO) includes all PRC members.

Agenda Setting

Leduc's PRC and City Council endorsed the **Pathways to Wellbeing Framework** and support that its ideas, principles and priorities are applied to recreation planning, programs and services in our community.

The Framework describes five goals and priorities for action under each goal. The goals are:



Goal 1: Active Living
Foster active living through physical recreation.



Goal 2: Inclusion and Access
Increase inclusion and access to recreation for populations that face constraints to participation.



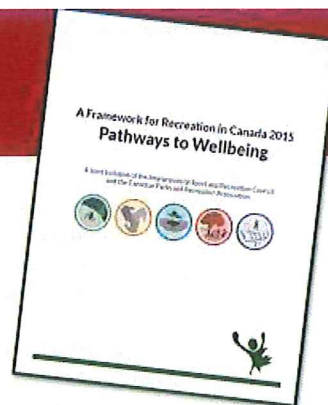
Goal 3: Connecting People and Nature
Help people connect to nature through recreation.



Goal 4: Supportive Environments
Ensure the provision of supportive physical and social environments that encourage participation in recreation and build strong, caring communities.



Goal 5: Recreation Capacity
Ensure the continued growth and sustainability of the recreation field.





Parks, Open Space and Trails (POST) Master Plan Update & Minimum Landscape Design and Construction Standards Update



City of
Leduc



City of Leduc
IBI Group
January 2020

Overview - Objectives of the Updates

The objectives of the updates to the two existing City documents include:

POST Master Plan:

- update the plan for existing and proposed multiway
- an updated parks and open space inventory to reflect recent growth
- update the vision and develop related strategies for the City's multiway and parks and open space system.
- reflect and integrate newly developed approved plans such as the City's Transportation Master Plan and Engineering Standards.
- strategic recommendations for the development and prioritization

Minimum Landscape Design and Construction Standards

- Clarify the developer responsibilities for multiway
- consider the standards and requirements of other regional municipalities
- consider current best practices
- Reflect the changes to the POST Master Plan
- Reflect current City strategies and policy



IBI Group
City of Leduc

Parks, Open Space and Trails (POST) Master Plan Update and
Minimum Landscape Design and Construction Standards Update
January 2020

Overview - Summary of the Updates

Summary of the Main Changes to the POST Master Plan

- An updated vision for POST
- Changes to Parks and Open Space categories and subcategories
- References to recently adopted City policies and plans
- Increased focus on environmental sustainability
- An update of current trends in recreation
- An update of the opportunities for volunteering
- Update to mapping of multiway and open space
- Addition of a summary inventory for Municipal Reserves and Environmental Reserves

Summary of the Financial Impacts to the POST Master Plan

- Implementation of multiways at the development stage by developers
- Requirement of 50% connectivity around storm water management facilities
- Consideration for artificial turf facility at Crystal Creek
- Recommendation for preservation of parkland in the Crystal Creek for the West campus
- Promotion of continued project partnerships

Overview - POST Master Plan Update

An updated vision for POST in Leduc:

In Leduc, you can 'come out and play' in the best parks system in Alberta. When you take advantage of Leduc's comprehensive network of parks, open space and trails, you and your family can explore your community, get to know your neighbours, experience nature and take part in a wide variety of outdoor activities throughout the year.

Parks, open space and trails in Leduc are well managed, fiscally and ecologically sustainable, safe, accessible, natural, beautiful and enrich the overall quality of life for everyone in the community.



1. Introduction

Biophysical Context

The biophysical attributes of the City were not addressed in the 2012 plan.



1. Introduction

Needs, Trends & Priorities

Key Trends in Parks & Recreation

The benefits of participating in parks and recreation activities cannot be understated. On an individual level, involvement in leisure programs and services:

- improves personal health and reduction of healthcare costs;
- promotes community social cohesion;
- increases community spirit and pride;
- improves quality of life;
- reduces anti-social behaviours;
- strengthens families and neighbourhoods;
- improves work performance and productivity;
- prolongs independent living;
- reduces stress and achieves balance in life;
- connects people with nature
- application of technology (web-based apps) to recreation.

1. Introduction

Needs, Trends & Priorities

Implication of the Parks, Open Space and Trails Trends for the City of Leduc

- Demand for access to high quality park experiences will continue to increase.
- Multiways need to balance a quality trail experience with the needs of alternative transportation.
- Linear Parks/Greenways create resident access to parks and increase potential for active transportation.
- Recreation and sport tourism are economic generators for communities.
- Citizens will be requiring more technology related infrastructure in park spaces (Wi-Fi/Smart Parks/Augmented Reality)
- Multiways must be well connected to the key destinations throughout the City
- More partnerships agreements will be required.

2. Planning Foundations

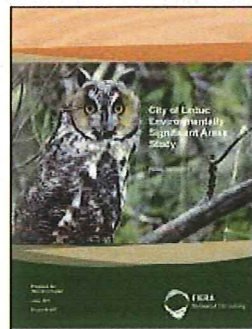
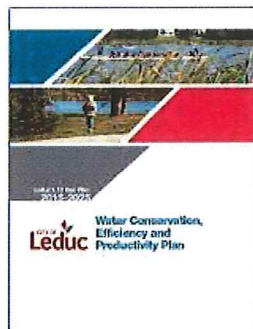
Related Policy, Plans & Strategies

Strategic Planning

Transportation Planning

Environmental Planning

Parks and Recreation Planning



3. Engaging Residents & Partners

What We Heard



3. Engaging Residents & Partners

Summary of Responses from Engagement – Key Themes

- Access & Connectivity
- Nature
- Facilities
- Amenities
- Safety
- Management & Maintenance
- Access and Connectivity
- Nature and Environment
- Facilities

5. The Future of Parks, Open Space and Trails

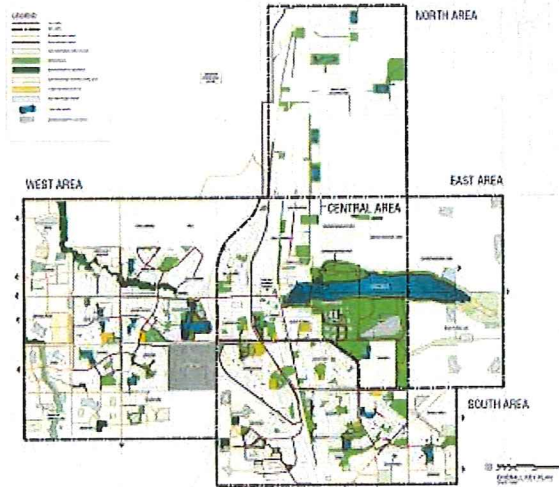
Revised Parks and Open Spaces Classifications

Parks and Open Spaces Classification	Role/Description	Minimum or Typical Area (where applicable)
Municipal Reserves		
Regional Parks	to meet the recreational needs for residents of the whole City and surrounding areas.	
Community Parks	to meet the parks and recreation needs of the City beyond those provided at the neighbourhood level.	
Neighbourhood Parks	neighbourhood level parks are generally intended to meet the needs of a population of 2,000 to 2,500 people. The focus of these parks should be to serve both the active and passive activity needs of those living nearby.	Minimum 0.5 ha
Linear Parks/Greenways	These are connectors that link larger parks or open space areas and used for physical connection to parks, schools, SWMFs and adjacent neighbourhoods.	Minimum 10m width
Natural Areas/Environmental Reserves/ Conservation Reserves		
Municipal Open Space	Protection of environmentally significant/sensitive areas	
Stormwater Management Facilities (SWMFs)	stormwater management facilities reduce the risk of neighbourhood flooding by managing run-off before sending it to receiving waters including lakes, streams and rivers.	
PUL/Walkways	provide public access into neighbourhood parks and SWMFs and provide important linkages within and between neighbourhoods.	
Roadways/Landscape and Multiways	Roadway landscape provide an opportunity for multiway, and landscape enhancement within the City as well as providing a visual buffer for pedestrians, multiway users and adjoining residences.	

Table 6 – Parks and Open Spaces Classification

6. Plan for Parks, Open Space & Trails

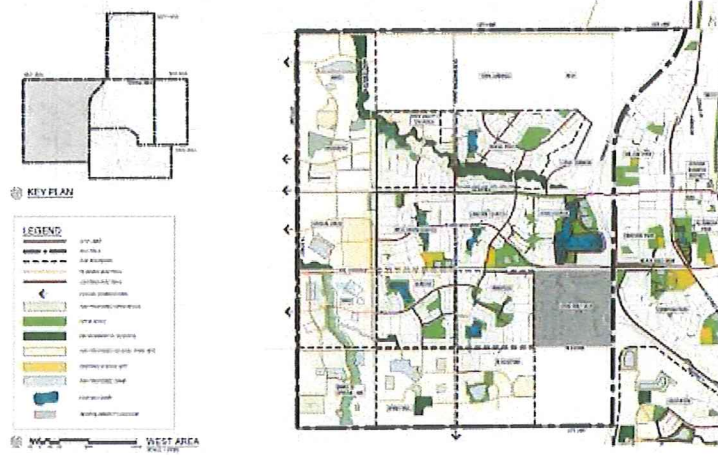
Overall Plan of Existing and Proposed Open Space and Multiway



6. Plan for Parks, Open Space & Trails

West Leduc (Area A)

West-end Integrated Recreational Facility – Crystal Creek, Golf Course Opportunities & Recent and future neighbourhood growth areas



6. Plan for Parks, Open Space & Trails

North Leduc (Area B)

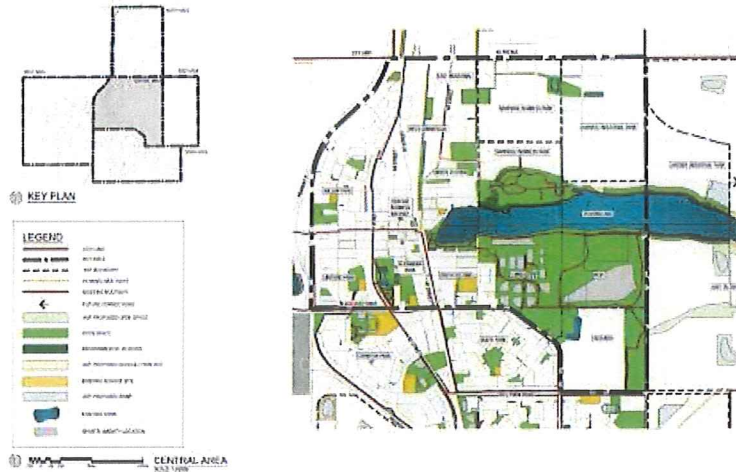
Multiway link from Telford Lake to existing open space



6. Plan for Parks, Open Space & Trails

Central Leduc (Area C)

Telford Lake, William F. Lede Regional Park, Alexandra Park, Downtown Leduc



IBI Group
City of Leduc

Parks, Open Space and Trails (POST) Master Plan Update and
Minimum Landscape Design and Construction Standards Update
January 2020

20

6. Plan for Parks, Open Space & Trails

South Leduc (Area D)

Recent and future neighbourhood growth areas



IBI Group
City of Leduc

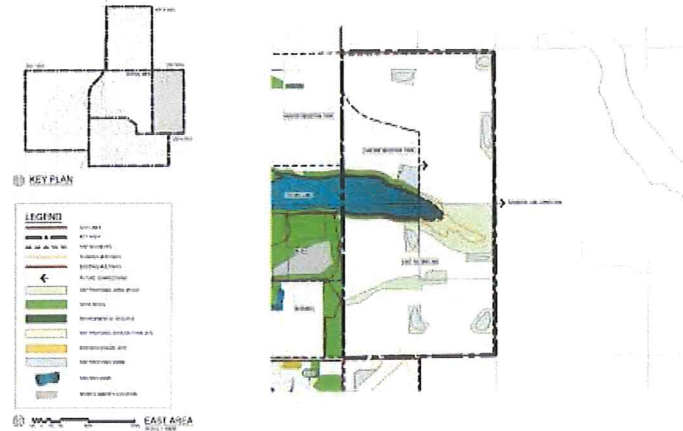
Parks, Open Space and Trails (POST) Master Plan Update and
Minimum Landscape Design and Construction Standards Update
January 2020

16

6. Plan for Parks, Open Space & Trails

East Leduc (Area E)

East Telford Lake Area Structure Plan, Lakeside Industrial Park ASP, Telford Lake – Saunders Lake Corridor



Landscape Standards Changes

Summary of the Main Changes to the Landscape Standards

- Clarification that all multiways in new neighbourhoods are the responsibility of the developer.
- No trees or shrubs in PUL/walkways, to simplify maintenance.
- Increased topsoil depth for grassed areas, to increase potential rainfall infiltration. (Reflects requirements of other regional municipalities)
- All shrub beds to have aluminum edger, to simplify maintenance.
- Low impact development initiatives, to increase potential rainwater infiltration. Reflects environmental policy and the trend in other regional municipalities.
- More landscape naturalization
- Inclusion of fountains in new developments
- Ensure consistency with the POST Master Plan.



Objectives and Design Principles

Design Principles

Designs shall:

- Aim to ensure the security, safety, and accessibility of the public;
- Consider the protection of valuable cultural features;
- Ensure the preservation of significant natural landscapes;
- Aim to introduce unique and decorative design features within the landscape; and
- Employ sustainable design practices in all aspects of the project

The following are important topics and guidelines which shall be considered in the design process:

- Leadership in energy and environmental design (LEED)–site & building design & LEED for neighbourhood development
- Universally accessible design
- CPTED (Crime Prevention through Environmental Design)
- Alberta Building Code for Structures
- Design for Winter Cities



Public Lands to Which the Standards Apply

Summary of Developer Responsibility

Table 1 - Developer Responsibility & Associated Guidelines for Development

Land Category	Park and Open Space Classification	*Recreation Contribution	Developer Responsibility	** Partnership Opportunities	Applicable City of Leduc Guidelines & Standards
Municipal Reserve	Regional Park	✓		✓	Park, Open Space & Trails Master Plan & Minimum Landscape Design Standards
	Community Park	✓	✓	✓	Minimum Landscape Design Standards
	Neighborhood Park		✓	✓	Minimum Landscape Design Standards
	Linear Parks/ Greenway	✓	✓	✓	Minimum Landscape Design Standards & Minimum Landscape Design Standards



Public Lands to Which the Standards Apply

Summary of Developer Responsibility

Environmental Reserve	Natural Areas/Environmental Reserves/Conservation Reserves	✓		✓	Park, Open Space & Trails Master Plan
Municipal Open Space	Stormwater Management Facilities (SWMFs)		✓		Minimum Landscape Design Standards
	Public Utility Lot (PUL)/Walkways		✓		Minimum Landscape Design Standards
Multitway***		✓	✓		City of Leduc Eng. Standards and Multitway Trail Detail
Roadways	Arterial, Collector, Local Roads – Medians & Boulevards		✓		Minimum Landscape Design Standards

* The Recreation Contribution is collected by the City of Leduc at issuance of the Building Permit. These funds are collected for the construction of indoor and outdoor recreational facilities, which could include swimming pools and the multitway linkages between neighborhoods.

** Where partnership opportunities are indicated, developers to collaborate with the City of Leduc to provide amenities and enhancements beyond the standards specified in this document.

*** The Developer is responsible for the construction of the multitways.

Design Standards

General Requirements

Table 2 - Minimum Landscape Requirements Summary

	Landscape Requirements				
	Planting***	Vegetation****	Fencing	Park Facilities	Trail & Multitway Linkages
Regional Park	75 trees per hectare excluding existing	✓	Minimum 1.2m High Uniform Fence at all boundaries between public and private property	Facilities will be required at the discretion of the City of Leduc - See Table 5 for requirements	Trail linkages to be designed to Multitway standards
Community Park	75 trees per hectare excluding existing	✓	Minimum 1.2m High Uniform Fence at all boundaries between public and private property	Facilities will be required at the discretion of the City of Leduc - See Table 5 for requirements	Trail linkages to be designed to Multitway standards
Neighborhood Park	75 trees per hectare excluding existing	✓	Minimum 1.2m High Uniform Fence at all boundaries between public and private property	Facilities will be required at the discretion of the City of Leduc - See Table 5 for requirements	Trail linkages to be designed to Multitway standards
Linear Park/Openway	75 trees per hectare excluding existing	✓	Minimum 1.2m High Uniform Fence at all boundaries between public and private property	Facilities will be required at the discretion of the City of Leduc - See Table 5 for requirements	Trail linkages to be designed to Multitway standards
Stormwater Management Facility	75 trees per hectare excluding existing	✓	Minimum 1.2m High Uniform Fence at all boundaries between public and private property	Facilities will be required at the discretion of the City of Leduc - See Table 5 for requirements	Trail linkages to be designed to Multitway standards
Public Utility Corridor	Where installation of utility company	✓	Minimum 1.2m High Uniform Fence at all boundaries between public and private property	Facilities will be required at the discretion of the City of Leduc - See Table 5 for requirements	Trail linkages to be designed to Multitway standards
Environmental Reserve/Conservation Reserve	Shall be preserved in its natural state & protected from disturbance	N/A	N/A	N/A	N/A
Arterial	See Table 6 Tree Spacing on Boulevards/Highways	✓	1.0m height (Urban Parks) Plantings and Signs at all intervals of the City of Leduc	N/A	N/A
Collector	See Table 6 Tree Spacing on Boulevards/Highways	✓	1.0m height (Urban Parks) Plantings and Signs at all intervals of the City of Leduc	N/A	N/A
Local Roads (with separate width)	See Table 6 Tree Spacing on Boulevards/Highways	✓	1.0m height (Urban Parks) Plantings and Signs at all intervals of the City of Leduc	N/A	N/A

* Tree planting requirements to be evaluated for size and total of trees/sections.
 ** See Table 5 for recommended facilities for Neighborhood and Community Parks.
 *** Substitutes rate: 1 tree = 5 shrubs.
 **** Where alternative planting is required in the Developer Agreement.
 ***** Specs may be approved at the discretion of the City of Leduc at design review.

Table 3 - Required and Recommended Recreation Facilities for Neighborhood & Community Parks

Park Size	Park Classification	
	Neighborhood Park Greater than 0.5 ha	Community Park Facility Dependent
Minimum Landscape Design Standards	✓	✓
Facilities		
Multi-use Ball Diamond	◇	◇
Senior Softball		◇
Junior Soccer Field	◇	
Senior Soccer/Football		◇
Rugby Field		◇
All-terrain Track & Field		◇
Multi-use Field	◇	◇
Tennis Courts		◇
Outdoor Rink	◇	◇
Pre-school Age Playground	✓	
School Age Playground	◇	◇
Sliding Hill	* Joint per neighborhood	
Park Amenities & Furniture	✓	✓
Workrooms or Porta Potty's		◇
Paved Area	◇	◇

◇ Recommended Facilities * Required Facilities

Municipal Reserve and Municipal Open Space
planting
An update to the acceptable tree species list.