

Edmonton International Airport

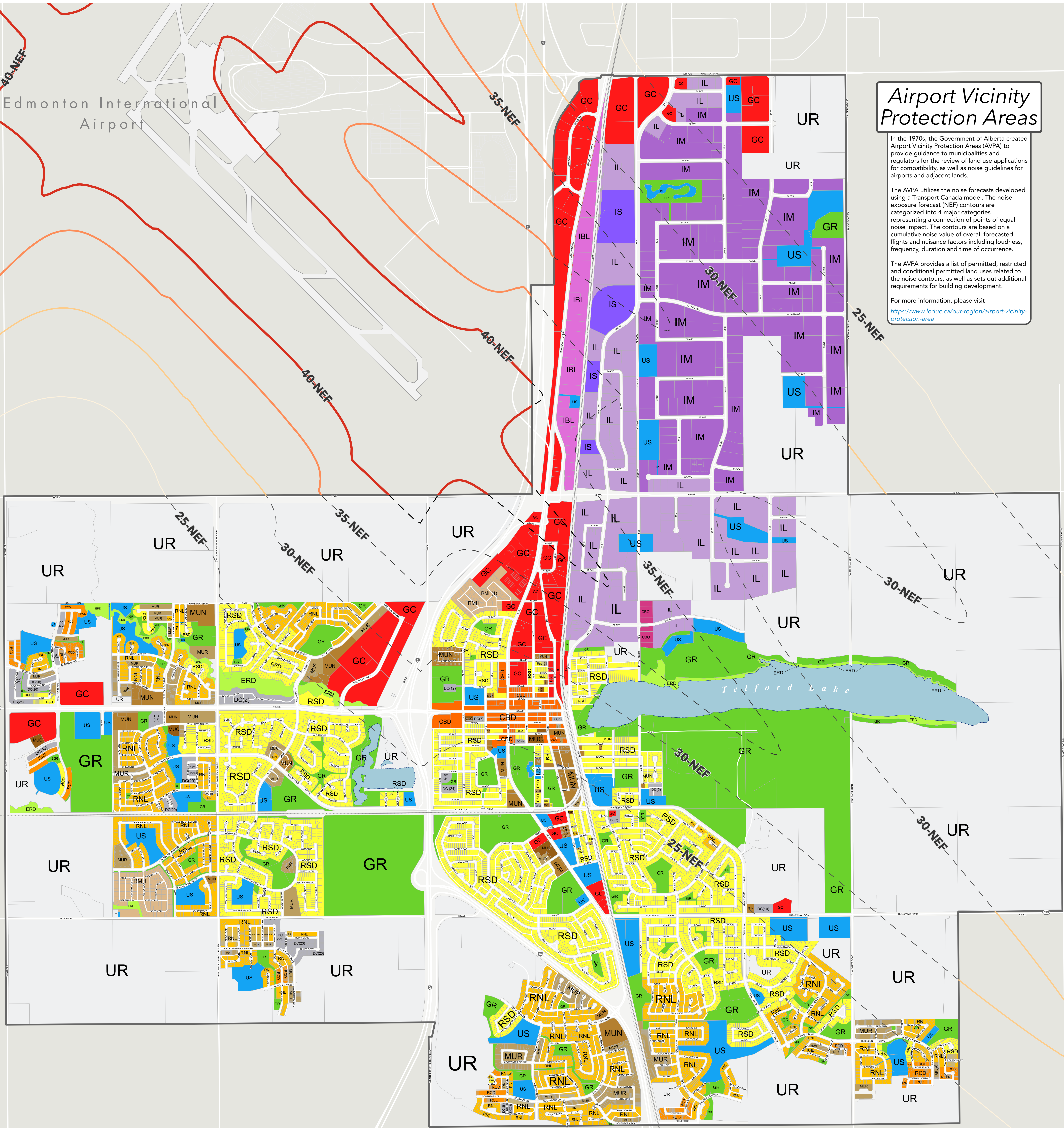
## Airport Vicinity Protection Areas

In the 1970s, the Government of Alberta created Airport Vicinity Protection Areas (AVPA) to provide guidance to municipalities and regulators for the review of land use applications for compatibility, as well as noise guidelines for airports and adjacent lands.

The AVPA utilizes the noise forecasts developed using a Transport Canada model. The noise exposure forecast (NEF) contours are categorized into 4 major categories representing a connection of points of equal noise impact. The contours are based on a cumulative noise value of overall forecasted flights and nuisance factors including loudness, frequency, duration and time of occurrence.

The AVPA provides a list of permitted, restricted and conditional permitted land uses related to the noise contours, as well as sets out additional requirements for building development.

For more information, please visit <https://www.leduc.ca/our-region/airport-vicinity-protection-area>



### Land Use

RSD - Residential Standard District	CBD - Central Business District	US - Urban Services
RNL - Residential Narrow Lot	GC - General Commercial	GR - General Recreation
RCD - Residential Compact Development	CBO - Commercial Business Orientated	ERD - Environmental Restricted Development
RMH - Residential Manufactured Home	IBL - Business Light Industrial	UR - Urban Reserve
MUR - Mixed-Use Residential	IL - Light Industrial	DC - Direct Control
MUN - Mixed-Use Neighbourhood	IM - Medium Industrial	
MUC - Mixed-Use Comprehensive	IS - Special Industrial	

### AVPA Contours

	NEF - 25
	NEF - 30
	NEF - 35
	NEF - 40

### Land Use Overlays

Not all overlays may be shown on the Land Use Bylaw Map. Please refer to Section 18.0 of the Land Use Bylaw or contact the City of Leduc Planning Department for more detailed information.