

Bylaw No. 934-2016

PAGE 1

A BYLAW OF THE CITY OF LEDUC IN THE PROVINCE OF ALBERTA, TO AMEND THE CITY OF LEDUC MUNICIPAL DEVELOPMENT PLAN

The *Municipal Government Act*, R.S.A. 2000, Chapter M-26, as amended, grants a municipality the authority to pass a Municipal Development Plan Bylaw.

WHEREAS, Section 632 of the *Municipal Government Act* requires the municipal council to adopt a municipal development plan to address future land use within the municipality;

WHEREAS, Section 638 of the *Municipal Government Act* requires that all statutory plans adopted by the City of Leduc to be consistent with other statutory plans;

WHEREAS, notice of intention to pass this bylaw has been given and a public hearing has been held in accordance with the Act;

AND WHEREAS, the Council of the City of Leduc has deemed it necessary to amend the Municipal Development Plan;

THEREFORE, the Council of the City of Leduc in the Province of Alberta duly assembled, hereby enacts as follows:

1. Bylaw No. 773-2011, City of Leduc Municipal Development Plan 2012, is amended by this bylaw.
2. Schedule A of Bylaw 773-2011, the "City of Leduc Municipal Development Plan 2012", is amended as follows:
 - a) The List of Figures shall be deleted and replaced with the following:

Figure 1:	Regional Context
Figure 2:	Municipal Boundary
Figure 3:	Parks, Multiway, and Natural Areas
Figure 4:	Municipal Development Plan Policy Areas
Figure 5:	Approved Statutory Plans - February 2012
Figure 6:	Existing Transportation Network
Figure 7:	Future Transportation Network
Figure 8:	Transportation Routes
Figure 9:	Stormwater Management
Figure 10:	Existing and Future Water Utilities
Figure 11:	Existing and Future Sanitary Sewer Utilities
Figure 12:	Intermunicipal Development Plan Growth Scenario
Figure 13:	Intermunicipal Development Plan Policy Areas
Figure 14:	Capital Region Board (CRB) Map

Bylaw No. 934-2016

PAGE 2

- b) Figure 4: Municipal Development Plan Policy Areas shall be deleted and replaced with the attached Figure 4: Municipal Development Plan Policy Areas;
 - c) Figure 12: Intermunicipal Development Plan Growth Scenario shall be deleted and replaced with the attached Figure 12: Intermunicipal Development Plan Growth Scenario; and
 - d) Figure 13: Intermunicipal Development Plan Policy Areas shall be deleted and replaced with the attached Figure 13: Intermunicipal Development Plan Policy Areas.
3. This Bylaw shall come into force and effect when it receives Third Reading and is duly signed.

READ A FIRST TIME IN COUNCIL THIS ____ DAY OF _____, AD 2016.

READ A SECOND TIME IN COUNCIL THIS ____ DAY OF _____, AD 2016.

APPROVED BY THE CAPITAL REGION BOARD ON THE ____ DAY OF _____, 2016.

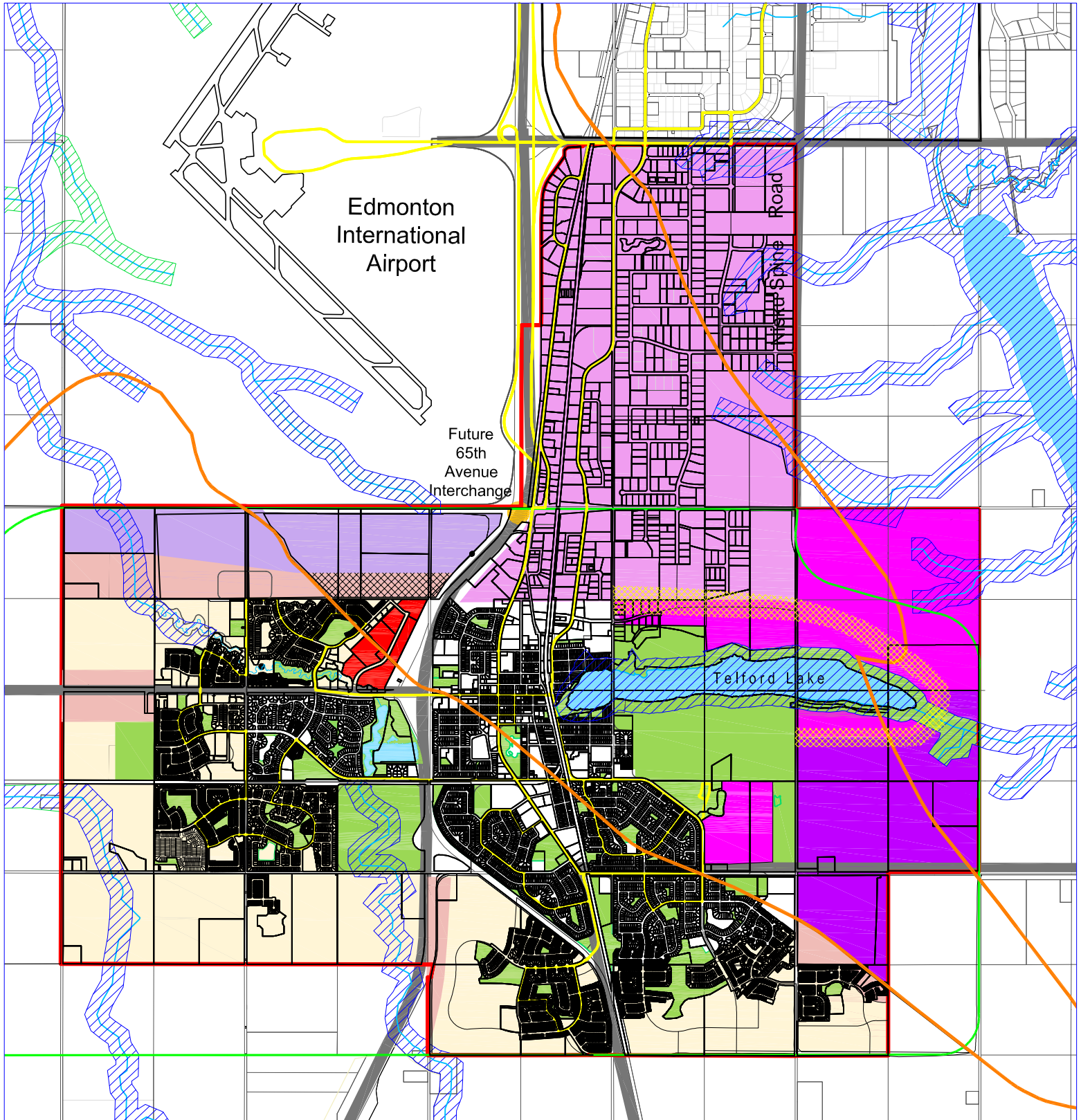
READ A THIRD TIME IN COUNCIL AND FINALLY PASSED THIS ____ DAY OF _____, AD 2016.

Greg Krischke
MAYOR

Sandra Davis
CITY CLERK

Date Signed

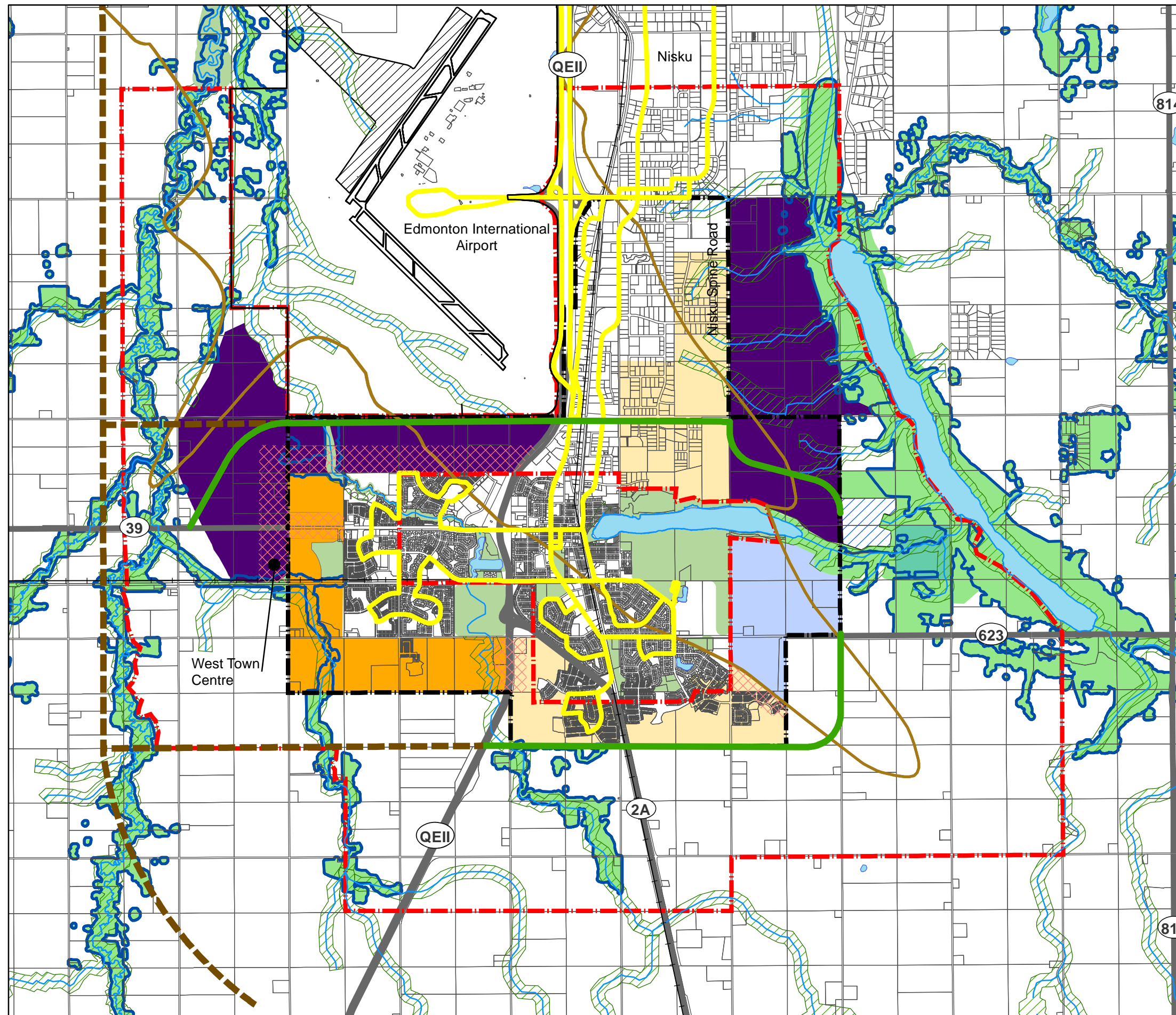
Figure 4: Municipal Development Plan Policy Areas



Legend

- | | | |
|--|--|---|
| City of Leduc Boundary (Effective Jan 1st, 2014) | Telford Lake Commercial, Office, Light Industrial, and Business Park | Transitional Business Mixed Use |
| Transitional Residential Mixed Use | Leduc Common | Transitional Industrial Use |
| Aerotropolis Business Industrial | Open Space and Greenways | Riparian Areas |
| Nisku/Leduc Business Industrial | Approved / Future Residential ASPs | Future Major Roadway (conceptual - refer to Figure 7) |
| Southeast Business Industrial | Water Bodies, Creeks and Rivers | Future Interchanges (conceptual) |
| | | Leduc Transit |
| | | N.E.F. 30 Contour |

FIGURE 12: INTERMUNICIPAL DEVELOPMENT PLAN GROWTH SCENARIO

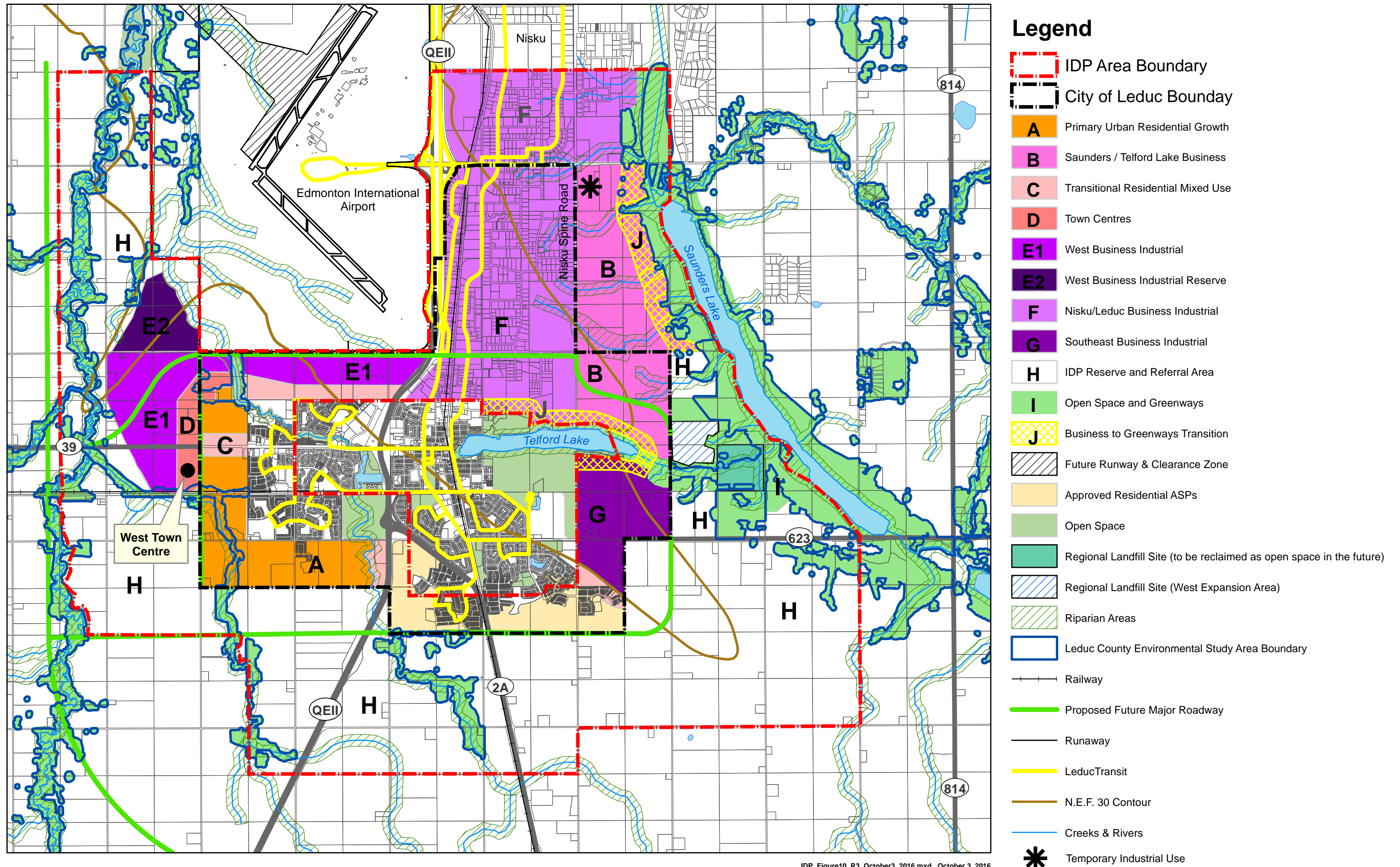


Legend

- Commercial / Industrial to 2044
- Commercial / Industrial (long term)
- Primary Urban Residential Growth
- Existing ASP
- Mixed Use Transition
- IDP Area Boundary
- City of Leduc Bounday
- Water Bodies, Creeks and Rivers
- Open Space
- Riparian Areas
- Future Runway & Clearance Zone
- Regional Landfill Site (to be reclaimed as open space in the future)
- Regional Landfill Site (West Expansion Area)
- Leduc County Environmental Study Area Boundary
- Future Major Roadway
- Potential Future Roadway
- LeducTransit
- N.E.F. 30 Contour



FIGURE 13: INTERMUNICIPAL DEVELOPMENT PLAN POLICY AREAS



Legend

- IDP Area Boundary
- City of Leduc Bounday
- A Primary Urban Residential Growth
- B Saunders / Telford Lake Business
- C Transitional Residential Mixed Use
- D Town Centres
- E1 West Business Industrial
- E2 West Business Industrial Reserve
- F Nisku/Leduc Business Industrial
- G Southeast Business Industrial
- H IDP Reserve and Referral Area
- I Open Space and Greenways
- J Business to Greenways Transition
- Future Runway & Clearance Zone
- Approved Residential ASPs
- Open Space
- Regional Landfill Site (to be reclaimed as open space in the future)
- Regional Landfill Site (West Expansion Area)
- Riparian Areas
- Leduc County Environmental Study Area Boundary
- Railway
- Proposed Future Major Roadway
- Runaway
- LeducTransit
- N.E.F. 30 Contour
- Creeks & Rivers
- Temporary Industrial Use