

CITY OF LEDUC
COMMITTEE-OF-THE-WHOLE MEETING AGENDA



Monday, September 16, 2019, 5:00 P.M.
Lede Room, Leduc Civic Centre
1 Alexandra Park, Leduc, Alberta

Pages

-
1. CALL TO ORDER
 2. APPROVAL OF AGENDA
 3. ADOPTION OF PREVIOUS NOTES
 - 3.1 Approval of Notes of the Committee-of-the-Whole Meeting held Monday, September 9, 2019. 3 - 6
 4. DELEGATIONS & PRESENTATIONS
 5. BUSINESS ARISING FROM PRESENTATIONS
 6. IN-CAMERA ITEMS
 - 6.1 **Surety Bonds**

FOIP s. 24 & 27

(L. Randa, Brownlee LLP - 30 minutes)

FIRST ITEM OF BUSINESS

TIME SPECIFIC AT 5 PM
 - 6.2 **Regional Transit Update**

FOIP s. 16, 24 & 25

(A. Thom, Ernst & Young LLP - 45 minutes)

TIME SPECIFIC AT 5:30 PM
 - 6.3 **Verbal Update on Christenson Senior Housing Development**

FOIP s. 16, 24 & 25

(M. Pieters - 10 minutes)

6.4 Intermunicipal Projects Update/Strategic Planning

FOIP s. 24 & 25

Last Item of Business

7. RISE AND REPORT FROM IN-CAMERA ITEMS

8. REPORTS FROM COMMITTEE & ADMINISTRATION

8.1 RCMP Annual Update

7 - 23

(Insp. D. Kendall, RCMP - 30 minutes)

PowerPoint Attached

TIME SPECIFIC AT 6:30 PM

8.2 Utilities Cross Connection Control Program

24 - 41

(S. Tooth/R. Sereda - 20 minutes)

PowerPoint Attached

9. GOVERNANCE

10. COUNCIL CALENDAR UPDATES

11. INFORMATION ITEMS

12. ADJOURNMENT



**NOTES OF THE CITY OF LEDUC
COMMITTEE-OF-THE-WHOLE MEETING**

Monday, September 9, 2019

Present: Mayor B. Young, Councillor B. Beckett, Councillor G. Finstad,
Councillor B. Hamilton, Councillor L. Hansen, Councillor T. Lazowski,
Councillor L. Tillack
Also Present: P. Benedetto, City Manager, S. Davis, City Clerk

1. CALL TO ORDER

Mayor B. Young called the meeting to order at 5 pm.

2. APPROVAL OF AGENDA

MOVED by Councillor B. Beckett

That the Committee-of-the-Whole approve the agenda with the following additions:

6. IN-CAMERA ITEMS

6.2 Economic Development FOIP s. 21, 24 & 25

6.3 Community Partnerships FOIP s. 16, 21, 24 & 25

8. REPORTS FROM COMMITTEE & ADMINISTRATION

8.3 Condominium Update

8.4 Procurement Policy

Motion Carried Unanimously

3. ADOPTION OF PREVIOUS NOTES

**3.1 Approval of Notes of the Committee-of-the-Whole Meeting held Monday,
August 19, 2019**

MOVED by Councillor L. Hansen

That the Notes of the Committee-of-the-Whole meeting held on Monday, August 19, 2019, be approved as presented.

Motion Carried Unanimously

4. DELEGATIONS & PRESENTATIONS

There were no delegations or presentations.

5. BUSINESS ARISING FROM PRESENTATIONS

6. IN-CAMERA ITEMS

That Committee-of-the-Whole move In-Camera at 5:05 pm to discuss:

6.1 Taxation and Economic Development Considerations

6.2 Economic Development

6.3 Community Partnership

MOVED by Councillor B. Beckett

That the Committee-of-the-Whole moved In-Public at 5:49 pm.

Motion Carried Unanimously

7. RISE AND REPORT FROM IN-CAMERA ITEMS

7.1 Taxation and Economic Development Considerations

Also in attendance:

Executive Team

J. Cannon, Director, Finance

G. Damo, Manager, Revenue Services

G. Klenke, City Solicitor

S. Davis, City Clerk

J. Cannon and G. Damo made a PowerPoint presentation (Attached to Agenda).

J. Cannon, I. Sasyniuk, General Manager, Corporate Services, P. Benedetto, City Manager, and D. Melvie, General Manager, Community and Protective Services, answered the Committee's questions.

7.2 Economic Development

Also in attendance:

Executive Team

G. Klenke, City Solicitor

S. Davis, City Clerk

Councillor G. Finstad made a presentation and answered the Committee's questions.

7.3 Community Partnership

Also in attendance:

Executive Team

G. Klenke, City Solicitor

S. Davis, City Clerk

D. Melvie, General Manager, Community and Protective Services, made a presentation and answered the Committee's questions.

8. REPORTS FROM COMMITTEE & ADMINISTRATION

8.1 Integrated Enterprise Finance and HR System

I. Sasyniuk, General Manager, Corporate Services, J. Cannon, Director, Finance, J. Graham, Chief Information Officer and C. Tobin, Director, Human Resources, made a PowerPoint presentation (Attached to Agenda) to provide an update on the new Integrated Enterprise Finance and HR System.

J. Cannon, I. Sasyniuk, Mayor B. Young, P. Benedetto, City Manager and J. Graham answered the Committee's questions.

8.2 2019 Tax Shift Feedback for September 9, 2019

J. Cannon, Director, Finance, made a verbal presentation on assessment, the number of assessment complaints and number of matters settled. Assessors were able to settle many of the complaints.

J. Cannon, G. Klenke, City Solicitor, and Mayor B. Young answered the Committee's questions.

Administration will return with options to reduce the impact of higher tax increases for the properties noted in the report.

Committee-of-the-Whole recessed at 6:57 pm.

Committee-of-the-Whole reconvened at 7:27 pm.

8.3 Condominium Update

Councillor B. Hamilton advised that there appears to be some misinformation being provided to Condominium Boards in the City relative to the agreement reached with Edgewater Home Owners Association ("Edgewater").

M. Pieters, General Manager, Infrastructure and Planning, and P. Benedetto, City Manager, answered the Committee's questions.

Administration will create a response to other Condominium Associations who have inquired about the agreement reached with Edgewater, and the possibility of the City reaching similar agreements with them. Administration will bring the draft response to Council for consideration.

8.4 Procurement Policy

Councillor T. Lazowski requested that Administration come to a future Committee-of-the-Whole meeting to speak to the current Procurement Policy.

Administration will draft an invitation to local auto dealerships to attend the upcoming Reverse Trade Show.

9. INFORMATION ITEMS

There were no information items.

10. ADJOURNMENT

The meeting adjourned at 7:49 pm.

B. YOUNG, Mayor

S. DAVIS, City Clerk

RCMP



ROYAL CANADIAN MOUNTED POLICE



RCMP Q2 Update

Committee of the Whole Meeting

September 16th, 2019
Inspector Dale KENDALL
Officer in Charge, Leduc RCMP Detachment

RCMP



ROYAL CANADIAN MOUNTED POLICE

QE II Project

- Enforcement has been ongoing for 15 months, and will continue indefinitely
- The conclusion of the study conducted by the University of Alberta was that speeds in the 'Leduc Corridor' of Highway 2 are down up to 8.8 km/hr on average, and the difference is noticeable on a daily basis
- In June, all of the QE II Project shifts were cancelled in order to free up RCMP resources for the Northern Alberta Wildfires
- 2 impaired drivers were taken off the highway in this quarter



RCMP



ROYAL CANADIAN MOUNTED POLICE

QE II Project - Statistics

MAY

Total Violations = **537**

Avg. Observed Speed	Avg. Ticked Speed	Total Warnings	Total Other Contacts
131	131	37	22

Number of Shifts Worked in MAY **9**

JULY

Total Violations = **399**

Avg. Observed Speed	Avg. Ticked Speed	Total Warnings	Total Other Contacts
131	131	44	7

Number of Shifts Worked in JUL **10**

AUGUST

Total Violations = **448**

Avg. Observed Speed	Avg. Ticked Speed	Total Warnings	Total Other Contacts
131	131	36	0

Number of Shifts Worked in AUG **10**



RCMP



ROYAL CANADIAN MOUNTED POLICE

Criminal Intelligence Analyst

- Leduc detachment's analyst has been deployed & active for over a year
- Works closely with both frontline members and support sections
- Accomplishments to date include:
 - Crimes of Opportunity review & analytical report
 - Assistance to Leduc GIS/Drug units on serious investigations
 - Crime Mapping (*building and updating hot spots*)
 - Assistance to Leduc CRU building & maintaining Prolific Offender profiles



RCMP



ROYAL CANADIAN MOUNTED POLICE

Detachment Facilities Update

- Now in the planning stages of Phase 2
- Currently forecasted to break ground at the end of September 2019
 - Construction will begin with paving behind the current building in preparation for the 3-storey tower



RCMP



ROYAL CANADIAN MOUNTED POLICE

Staffing

- Leduc detachment is being staffed with 5 new recruits
- We have also accepted several experienced members from detachments in Alberta and British Columbia



RCMP



ROYAL CANADIAN MOUNTED POLICE

FTE Staffing Levels

2019 FTE Utilization - City



Average = 25.0

FTE by Week 32 FTE Target



RCMP



ROYAL CANADIAN MOUNTED POLICE

Divisional Statistical Highlights

Total Criminal Code files **increased by 15%** since 2014, **no change** since 2018.

Persons Crimes **increased by 10%** since 2014, **decreased by 8%** since 2018.

Property Crimes **increased by 21%** since 2014, **increased by 2%** since 2018.

Break and Enters **increased by 46%** (1,427 to 2,087) since 2014, **2% increase** since 2018.

Theft of Motor Vehicles **increased by 36%** (1,260 to 1,716) since 2014, **2% increase** since 2018.



RCMP

ROYAL CANADIAN MOUNTED POLICE

Crime Severity Index (CSI) for the Municipality

Leduc Municipal Detachment 2018 Metrics						
Metric	2013	2014	2015	2016	2017	2018
CC/RM	99.7	76.9	74.2	73.2	88.7	78.2
CSI	94.7	95.7	98.3	97.0	111.8	95.3
CC/1000	97.6	88.8	84.9	83.0	99.8	84.8
PPR	1,022	866	874	882	890	922

2017 = **112**

2018 = **95**

Leduc Municipal Detachment Criminal Code Clearance Rates						
CC Category	2013	2014	2015	2016	2017	2018
Persons	78%	70%	73%	79%	65%	56%
Property	17%	17%	18%	17%	15%	14%
Other	70%	70%	70%	73%	67%	61%
Total	42%	39%	37%	36%	30%	29%

The CSI for the City of Leduc decreased by 14.7% overall.



RCMP

ROYAL CANADIAN MOUNTED POLICE

5 Year Trend Criminal Code (JAN to AUG 2019)

Statistical Highlights

Up:

- Sexual assaults
- Theft Over \$5,000

Down:

- Robberies
- Assaults
- Other sexual offences

Leduc Municipal Detachment Crime Statistics (Actual) January to August: 2014 - 2019

All categories contain "Attempted" and/or "Completed"

September-04-19

CATEGORY	Trend	2014	2015	2016	2017	2018	2019	% Change 2014 - 2019	% Change 2018 - 2019	Avg File +/- per Year
Homicides & Offences Related to Death		6	0	3	0	0	1	-83%	N/A	-0.8
Robbery		7	16	2	14	15	14	100%	-7%	1.3
Sexual Assaults		18	11	15	18	17	20	11%	18%	0.9
Other Sexual Offences		3	13	7	12	17	15	400%	-12%	2.2
Assault		218	195	156	217	183	149	-32%	-19%	-9.1
Kidnapping/Hostage/Abduction		6	4	3	6	3	7	17%	133%	0.1
Extortion		0	1	1	6	2	3	N/A	50%	0.7
Criminal Harassment		73	53	59	52	55	53	-27%	-4%	-2.9
Uttering Threats		87	78	54	62	65	57	-34%	-12%	-5.2
TOTAL PERSONS		418	371	300	387	357	319	-24%	-11%	-12.9
Break & Enter		77	121	92	121	104	136	77%	31%	7.8
Theft of Motor Vehicle		72	87	104	241	118	106	47%	-10%	11.4
Theft Over \$5,000		11	18	22	28	25	34	209%	36%	4.1
Theft Under \$5,000		385	365	453	588	416	392	2%	-6%	9.2
Possn Strn Goods		42	50	54	90	64	54	29%	-16%	3.9
Fraud		130	140	156	221	162	165	27%	2%	8.7
Arson		5	6	7	3	8	2	-60%	-75%	-0.4
Mischief To Property		374	390	327	325	272	438	17%	61%	-1.0
TOTAL PROPERTY		1,096	1,177	1,215	1,617	1,169	1,327	21%	14%	43.8
Offensive Weapons		11	28	24	34	21	26	136%	24%	1.8
Disturbing the peace		247	176	141	159	151	152	-38%	1%	-15.2
Fail to Comply & Breaches		134	168	130	178	181	266	99%	47%	21.3
OTHER CRIMINAL CODE		81	81	78	81	92	76	-6%	-17%	0.3
TOTAL OTHER CRIMINAL CODE		473	453	373	452	445	520	10%	17%	8.3
TOTAL CRIMINAL CODE		1,987	2,001	1,888	2,456	1,971	2,166	9%	10%	39.2



RCMP



ROYAL CANADIAN MOUNTED POLICE

5 Year Trend Federal Statutes (JAN to AUG 2019)

Areas of Note

Up:

- Mental Health Act
- Injury MVC's
- Provincial Traffic

Down:

- Total Drugs
- Total MVC's
- False alarms
- False 911 offences

Leduc Municipal Detachment Crime Statistics (Actual) January to August: 2014 - 2019

All categories contain "Attempted" and/or "Completed"

September-04-19

CATEGORY	Trend	2014	2015	2016	2017	2018	2019	% Change 2014 - 2019	% Change 2018 - 2019	Avg File +/- per Year
Drug Enforcement - Production		2	2	0	3	2	0	-100%	-100%	-0.2
Drug Enforcement - Possession		94	106	96	82	60	32	-66%	-47%	-13.2
Drug Enforcement - Trafficking		39	42	26	34	36	14	-64%	-61%	-3.9
Drug Enforcement - Other		2	1	1	2	1	0	-100%	-100%	-0.3
Total Drugs		137	151	123	121	99	46	-66%	-54%	-17.5
Cannabis Enforcement		0	0	0	0	0	4	N/A	N/A	0.6
Federal - General		56	38	29	31	9	17	-70%	89%	-8.0
TOTAL FEDERAL		193	189	152	152	108	67	-65%	-38%	-24.9
Liquor Act		143	95	57	48	36	58	-59%	61%	-17.5
Cannabis Act		0	0	0	0	0	8	N/A	N/A	1.1
Mental Health Act		167	144	123	177	183	209	25%	14%	10.9
Other Provincial Stats		260	245	206	237	262	285	10%	9%	5.9
Total Provincial Stats		570	484	386	462	481	560	-2%	16%	0.5
Municipal By-laws Traffic		44	34	25	19	11	16	-64%	45%	-6.1
Municipal By-laws		207	183	198	250	218	203	-2%	-7%	3.9
Total Municipal		251	217	223	269	229	219	-13%	-4%	-2.2
Fatals		2	1	0	1	0	0	-100%	N/A	-0.3
Injury MVC		65	52	46	72	76	83	28%	9%	5.4
Property Damage MVC (Reportable)		474	391	363	405	460	414	-13%	-10%	-1.5
Property Damage MVC (Non Reportable)		60	40	55	50	47	41	-32%	-13%	-2.3
TOTAL MVC		601	484	464	528	583	538	-10%	-8%	1.3
Provincial Traffic		2,676	1,574	1,917	1,857	3,202	4,141	55%	29%	347.1
Other Traffic		34	60	23	27	16	26	-24%	63%	-4.8
Criminal Code Traffic		218	210	187	167	171	151	-31%	-12%	-13.5
Common Police Activities										
False Alarms		526	516	524	460	462	189	-64%	-59%	-54.6
False/Abandoned 911 Call and 911 Act		444	403	269	273	182	96	-78%	-47%	-68.5
Suspicious Person/Vehicle/Property		121	220	300	311	297	337	179%	13%	37.8
Persons Reported Missing		37	56	51	52	53	45	22%	-15%	0.9
Spousal Abuse - Survey Code (Reported)		250	282	328	333	307	322	29%	5%	12.6



RCMP

ROYAL CANADIAN MOUNTED POLICE

Crimes of Opportunity

Leduc detachment's Criminal Intelligence Analyst recently completed a report regarding an emerging trend in the community: crimes of opportunity.

Of the 527 police files reviewed for this report: 299 occurrences were not crimes of opportunity, 133 of the files were, and 95 could not be conclusively determined (of these 95, 62 reported no damage to property).

Category	Number	Percentage of Total
Not a Opp. Crime	299	57%
An Opp. Crime	133	25%
Not determinable	95	18%
Not determinable, no damage	62 (of the above 95)	12%
Total	527	100%

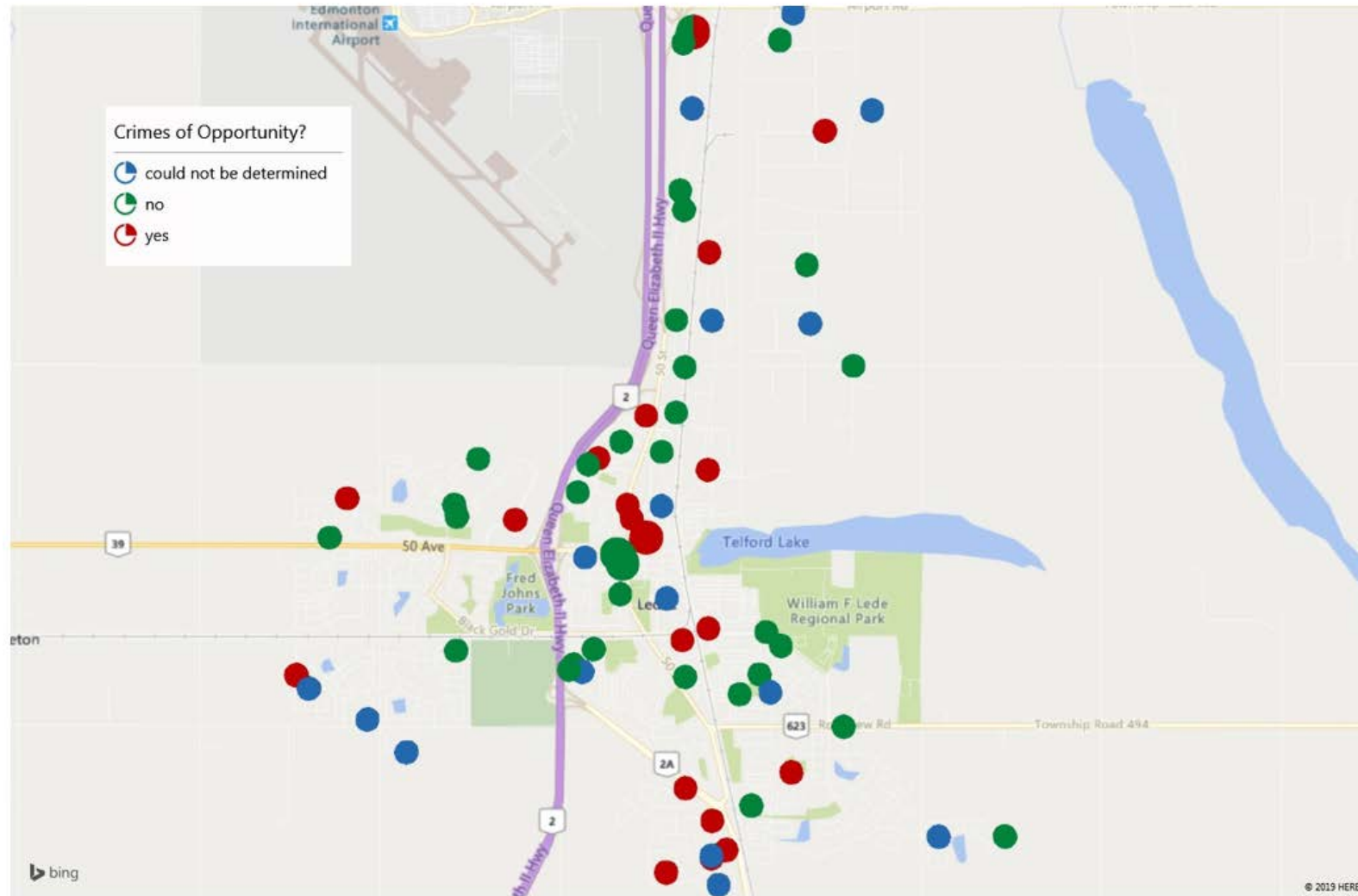


RCMP



ROYAL CANADIAN MOUNTED POLICE

City of Leduc Vehicle Theft Map



RCMP



ROYAL CANADIAN MOUNTED POLICE

APP 2019-2020 Priorities & Initiatives

Crime Reduction

Prolific Offender Management

- To date, members have performed 188 checks and laid 12 breach charges

Hot Spot Checks

- To date, members have completed 5,191 hot spot checks

Community Engagement

Check Stops

- Leduc members have engaged in 22 impaired driving check stops this year

Town Hall Meetings & Community Survey (complete)

Employee Wellness

Engaging & encouraging members to achieve a healthy work/life balance

- Detachment-wide health & wellness initiatives, recognition program



RCMP



ROYAL CANADIAN MOUNTED POLICE

Miscellaneous Updates

Black Gold Rodeo

- Proactive police presence and continuing community engagement resulted in only 1 arrest being made over the course of the weekend

School Resource Officer

- Cst. Neil MUZ has been retained in the position and extended for another year

Community Policing Officer / Victim Services Liaison

- Cst. Cheri-Lee SMITH has accepted the position and is excited to start in October

Northern Alberta Wildfires

- Leduc detachment deployed one member up to High Level to assist
- All QE II Project shifts for the month of June were cancelled to free up RCMP officers for deployment to the fires



RCMP



ROYAL CANADIAN MOUNTED POLICE

Files of Interest

False Homicide Report / Mischief

- Leduc detachment responded to a complaint of a shooting that had resulted in a homicide
- Members attended the address provided by the caller and quickly determined the call was a hoax
- The call was believed to have been made through a third-party digital application

5 Suspects Apprehended at No Frills (stolen vehicle, restricted weapons, breach charges)

- File came in as a BOLO from Wetaskiwin, suspects were located in the No Frills parking lot
- 5 individuals arrested, sawed-off shotgun seized, stolen vehicle recovered

Leduc Drug Unit Operations

- This past quarter, members of the Drug Unit have caused significant disruptions into the sale and trafficking of opiates and methamphetamines in the community
- A large sum of opiates, cash and property was seized, and a major distributor was arrested as a result of that investigation
- The Unit also dealt a significant blow to a 'dial-a-dope' enterprise which resulted in over an ounce of fentanyl being taken off the street along with cocaine, heroin, LSD and mushrooms. Six persons are currently being prosecuted.



RCMP



ROYAL CANADIAN MOUNTED POLICE

Questions?





COMMITTEE-OF-THE-WHOLE

MEETING DATE: September 16, 2019

SUBMITTED BY: Rick Sereda

PREPARED BY: Shawn Tooth

REPORT TITLE: Utility Cross Connection Control Program

EXECUTIVE SUMMARY

Cross Connection Control (CCC) programs are put in place by water purveyors to protect their water supply from contamination via backflow or backsiphonage. Utility Services has completed a survey of every business and multi-family property in an effort to locate and record the location of every CCC valve in the City.

Valves, like most mechanical devices, require ongoing maintenance to ensure they function as per design. Utility Services has developed a CCC program to ensure our water supply remains protected now and into the future. The proposed program will ensure all testable backflow preventers connected to the City of Leduc's water utility remain in proper working order.

BACKGROUND

A Cross Connection is defined as "any actual or potential connection between a potable water system and any source of pollution or contamination". Cross connections are present in every water supply system, and depending on the size of the system, hundreds or thousands of potential cross connections can exist. A Cross Connection Control program addresses the backflow threat as a result of cross connections by establishing operating policies and procedures as well as backflow preventer selection, installation, testing and maintenance practices and procedures. Two main causes of backflows are backsiphonage and back pressure:

Backpressure: A pressure, higher than the supply pressure, caused by a pump, elevated tank, boiler, or any other means that may cause backflow

Backsiphonage: Backflow caused by negative or reduced pressure in the supply piping.

In 2017, Utility Services contracted Schendel Mechanical Contracting Ltd. to perform a physical inspection of business and multi-family property in the City of Leduc, 966 inspections were completed. The inspections resulted in classifications for each of our business and multi-family properties according to the CSA standard for Cross Connection Control. Schendel Mechanical Contracting Ltd. (Schendel) recorded details and took pictures of every valve they could find.

Premises Isolation

Schendel's survey identified whether or not each of the properties inspected had a premises isolating cross connection control valve. According to the CSA standard (CSA B64.10-11, 5.3.1.2), all properties where a potentially severe hazard may exist require premises isolating devices. The inspections flushed out a total of 320 properties that require premises isolating cross connection control valves.

Maintenance Requirements

The CCC valves in question require annual maintenance, all affected businesses will be required to hire a qualified contractor to inspect their CCC valve annually. To become an approved contractor with EPCOR and Leduc (proposed), you only need to provide a valid Cross Connection Control Tester certificate issued by Western Canada Water. We have



COMMITTEE-OF-THE-WHOLE

developed a process (Utilizing BSM's software) to ensure the certificates are validated annually. BSM will mail two reminder notices to each approved vendor annually, reminding them to upload their up-to-date certificate. The list that we have developed originated from EPCOR's approved vendor list.

To make sure every Cross Connection Control Tester has a fair opportunity to provide service in Leduc, we will ensure there is a way (email, certificate upload, etc.) for qualified contractors to apply. The maintenance records for each CCC valve and contractor certifications will be managed by BSI Online Backflow Solutions Inc (BSI).

NEXT STEPS

Rebate Program Roll Out

We have developed a rebate program which to utilize the left over funds in the initial inspection budget. The program will reimburse property owners a specified amount (see below) based on the size of the CCC valve installed.

Meter size	Cost estimate to install device*	Rebate per device**	# of Devices	Total Rebate
5/8"	\$1,600.00	\$320	136	\$34,560
3/4"	\$1,600.00	\$320	44	\$13,760
1"	\$1,900.00	\$380	60	\$19,760
1 1/2"	\$2,900.00	\$580	41	\$16,240
2"	\$3,900.00	\$780	33	\$16,380
3"	\$6,000.00	\$1,200	3	\$3,600
4"	\$8,000.00	\$1,600	3	\$3,200
Total			320	\$138,320
Total Budget Remaining				\$152,741

Targeted Information Sharing

- We intend to mail notices to every qualifying business and multi family property to notify them of the upcoming maintenance program requirements as well as (if necessary) send them information on the requirements for premises isolation.
- We will update our website to include all required information.

Internal Procedure Tune Up

- Cross Connection Control Policy Approval
- Water Bylaw Update
- Building Codes Inspection Form Update

ATTACHMENTS



COMMITTEE-OF-THE-WHOLE

Power Point Presentation - Cross Connection Control Program CoW

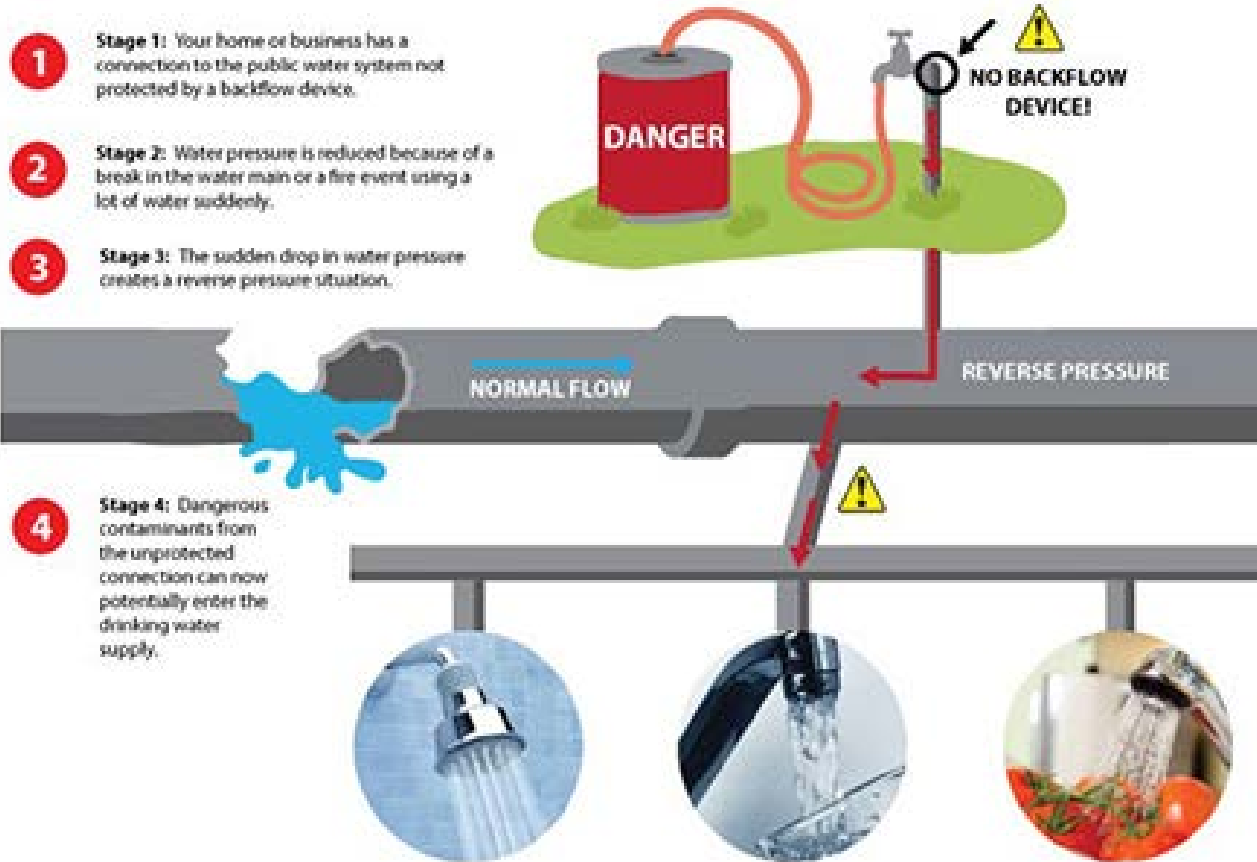
Cross Connection Control Program



What is a Cross Connection?

- ▶ “Any actual or potential connection between a potable water system and any source of pollution or contamination”.

HOW BACKFLOW CAN HAPPEN



The City of Leduc's Authority

- ▶ The City of Leduc derives its authority to deliver and enforce its Cross Connection Control Program through the following enactments.
 - ▶ National Plumbing Code of Canada, ss. 2.6.2.1 #1-3
 - ▶ Alberta Municipal Affairs Standata P-08-03-NPC10[Rev 2] at p 3
 - ▶ Safety Codes Act, RSA 2000, C S-1, Article 14(1)
 - ▶ Alberta Environment Protection and Enhancement Act, RSA 200, c E-14, s. 148

How do Backflow Assemblies Work?

- ▶ Backflow prevention systems are devices installed onto a pipe that **only allow water to flow in one direction.**
- ▶ Think of it as a one-way gate that allows water from the city's public water supply to flow into your home's piping but stops water if and when it ever tries to flow backwards into the main water supply.

Who Should Have Backflow Assemblies Installed?

- ▶ Any business that falls under a risk category of moderate/severe to severe as per CSA Standard B64.10-/B64.10.1.



What is Premises Isolation?

Section 5.3.1.2 of CSA Standard B64.10-11 states:

“Premises isolation shall be provided by the installation of an RP backflow preventer on all water systems where a potentially severe hazard might be caused by backflow. The hazard shall be determined based on the type of occupancy or a survey of the premises.”

There are roughly 320 businesses that require premises isolation.

Where are we at Today?

We have completed a survey of every business and multi-family residential property in the City.

The surveys produced:

- An inventory of every CCC device.
- Detailed information (including pictures) for every device.
- A list of properties prioritized by risk according to the CSA B64 standard.
- A list of properties that have premise isolating CCC device.

We have engaged BSI Online to assist with maintenance records and customer interaction.

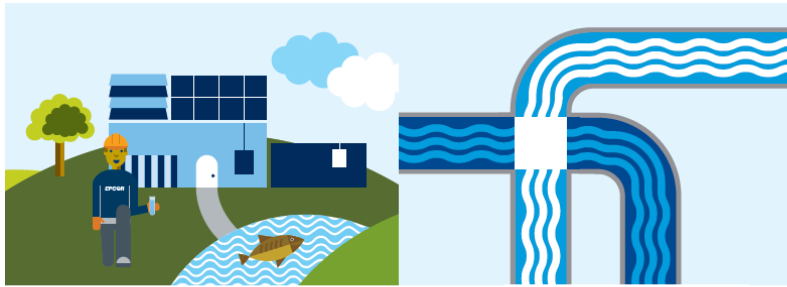
We have developed a list of qualified contractors who have Western Canada Water Cross Connection Control Tester Certification.

Initial Program Launch

- ▶ Target business and multi family housing that fall under the moderate to severe risk categories through a targeted robust media campaign.
- ▶ Active BSI Online's services.
- ▶ Utilizing existing cross connection control budget to administer a rebate program to assist with the cost of new backflow prevention devices.
- ▶ CCC Program Policy Approval
- ▶ Water Bylaw Update

Pamphlet describing the program

- ▶ Develop our own city branded pamphlet in a similar design to EPCOR's
- ▶ This will serve as the initial contact, and will be sent to business' that fall under the moderate to severe categories.



EPCOR'S CROSS CONNECTION CONTROL PROGRAM

To support commercial businesses and multi-residential property owners, EPCOR administers a cross connection control program.

This program:

- Maintains a database of facilities, building owners and backflow prevention assemblies installed within the building along with a test history of each of those assemblies and notes from inspections.
- Maintains a database of certified testers and installers of backflow prevention assemblies.
- Ensures that equipment used by all certified installers and testers are calibrated annually.
- Conducts cross connection inspections of new and existing buildings within the City of Edmonton.
- Notifies customers of past-due annual testing requirements.

IT'S THE LAW

By law, property owners of industrial, commercial, institutional, and multi-residential properties (four suites or more) must have the appropriate backflow preventers installed at the point where the potable water enters the building or facility, as well as any other existing cross connections on the property.

City of Edmonton Water Service and Wastewater Treatment Bylaw #15816

- No Customer shall install or allow any Cross Connection that could cause or allow drinking water, in any part of the Waterworks System to become contaminated or polluted in any way.
- Where EPCOR Water Services Inc. (EWSI) determines that a Cross Connection prohibited by this Section exists, [notice shall be given] to the Customer to correct the prohibited Cross Connection at the expense of the Customer within the time specified in the notice.
- Where the Customer fails to correct the Cross Connection in accordance with the notice, in addition to any other penalty, EWSI may turn off the prohibited supply of water for such time as the Cross Connection continues.



FOR MORE INFORMATION

Contact our Cross Connection Control Office
Phone: 780.412.7840
Fax: 780.412.7835
Email: epcorwaterccc@epcor.com

epcor.com/crossconnection

01/01/2015



WHY BACKFLOW IS BAD FOR BUSINESS

PROVIDING MORE 

Cross connection control website to be updated outlining the program

- ▶ Program outline
- ▶ FAQ
- ▶ Rebate program- how to submit claim
- ▶ Contact information- City representative and BSI online
- ▶ Redirect to BSI online
- ▶ Approved testers list and testing requirements
- ▶ City of Leduc Cross Connection Control Procedure Guide
- ▶ References- CSA, Water Bylaw, national plumbing code

Frequently Asked Questions

The questions and answers listed below will help to explain what backflow prevention and cross connection control is all about, and why this issue is so important to maintain the safety of our drinking water.

What is a cross-connection?

A cross-connection is any actual or potential connection between a potable (drinking) water system and any source of pollution or contamination.

What is backflow?

Backflow is a flowing back of water or reversal of the normal direction of flow. Backflow may occur due to either back [siphonage](#) or back pressure.

What is a backflow preventer?

Simply put, a backflow preventer is a device or assembly that prevents backflow. Some types of backflow preventers require testing to ensure that they will work as intended and there are some that do not require testing.

What is an expansion tank?

An **expansion tank** or **expansion vessel** is a small tank used to protect closed water heating systems and domestic hot water systems from excessive pressure. Backflow preventers do not allow extra pressure built up in the system to flow back into the potable water system therefore an expansion tank is required to store the extra pressure caused by heat expansion and pressure created by other process connected to the internal plumbing system.

What is back [siphonage](#)?

Back [siphonage](#) is backflow caused by a negative pressure (i.e., a vacuum or partial vacuum) in a public water system. The effect is similar to drinking water through a straw. Back [siphonage](#) can occur when there is a stoppage of water supply due to nearby firefighting, a break in a water main, high velocities in pipe lines, line repair or break that is lower than a service point, lowered main pressure due to high water withdrawal rate such as firefighting or water main flushing or reduced supply pressure on the suction side of the booster pump.

What is backpressure?

Back pressure is pressure that is greater than the municipal water system supply pressure. It can happen when there is a connection to a non-potable supply operating at a higher pressure than the water distribution system. Increases in pressure can be created by booster pumps, temperature increases in boilers, interconnections with systems operating at higher pressures, and elevated piping (e.g., 30 feet above finished grade).

What causes backflow?

An example is when there is a water main break and the area must be isolated and repaired. When the valves around the repair site are closed, the flow of water is stopped to all points of use such as homes and businesses and begins to flow backwards towards the repair. This is back [siphonage](#) and if there are cross connections, contaminants can be drawn into the water system.

Initial roll out letter to business explaining the program and directions to The City of Leduc cross connection control website for more information

- ▶ Follow up letters will be sent to customers that fall under the moderate/severe to severe categories.
- ▶ A deadline of Dec 31, 2020 will be given to install backflow prevention assemblies.

City of Leduc
 Cross-Connection Control Program
 PO Box 246
 Worth, IL



Romeoville Cafe
 C/O John Smith
 3217 Center St
 Leduc, AB T9E 4C4

Your Customer Confirmation Number (CCN) is: **0X00-X0XX**
 Use this # to see when your reports have been submitted at www.bsionlinetracking.com/customer

July 18, 2019

RE: Backflow Assembly Test Due at 3217 Center St

Dear Water Customer,

The Province of Alberta requires backflow prevention assemblies be installed on all hazardous cross-connections to help keep our water supply safe. These assemblies must be tested and certified every year to ensure that they are working properly. The City of Leduc has partnered with BSI Online to assist in administering the backflow program in your community. Our records show the following backflow assembly(s) at your property, which are due to be tested by **August 18, 2019**.

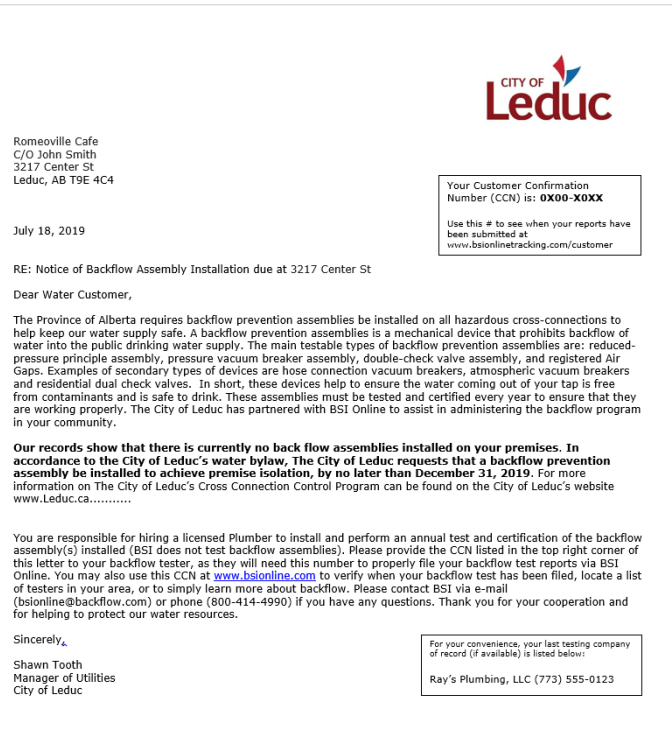
Size	Manufacturer	Model	Serial Number	Hazard	Location
1"	Febco	860	H07692	Irrigation	NE corner

You are responsible for hiring a licensed backflow tester to perform the annual test and certification of the backflow assembly(s) listed above (BSI does not test backflow assemblies). Please provide the CCN listed in the top right corner of this letter to your backflow tester, as they will need this number to properly file your backflow test reports via BSI Online. You may also use this CCN at www.bsionline.com to verify when your backflow test has been filed, locate a list of testers in your area, or to simply learn more about backflow. Please contact BSI via e-mail (bsionline@backflow.com) or phone (800-414-4990) if you have any questions. Thank you for your cooperation and for helping to protect our water resources.

Sincerely,

Christine Walsh, Vice President
 Agent for the City of Leduc

For your convenience, your last testing company of record (if available) is listed below:
 Ray's Plumbing, LLC (773) 555-0123



Proposed Rebate Program

Meter size	Meter size	Cost estimate to install device*	Rebate per device**	# of Devices	Total Rebate
5/8"	5/8"	\$1,600.00	\$320	136	\$34,560
3/4"	3/4"	\$1,600.00	\$320	44	\$13,760
1"	1"	\$1,900.00	\$380	60	\$19,760
1 1/2"	1 1/2"	\$2,900.00	\$580	41	\$16,240
2"	2"	\$3,900.00	\$780	33	\$16,380
3"	3"	\$6,000.00	\$1,200	3	\$3,600
4"	4"	\$8,000.00	\$1,600	3	\$3,200
Total				320	\$138,320
Total Budget Remaining					\$152,741

* Based on cost estimate per installation provided by Schendel mechanical.

**Rebate is 20% of the estimated cost. Devices are only those that are moderate/severe to severe and do not currently have a backflow preventer.

Thank you for your time